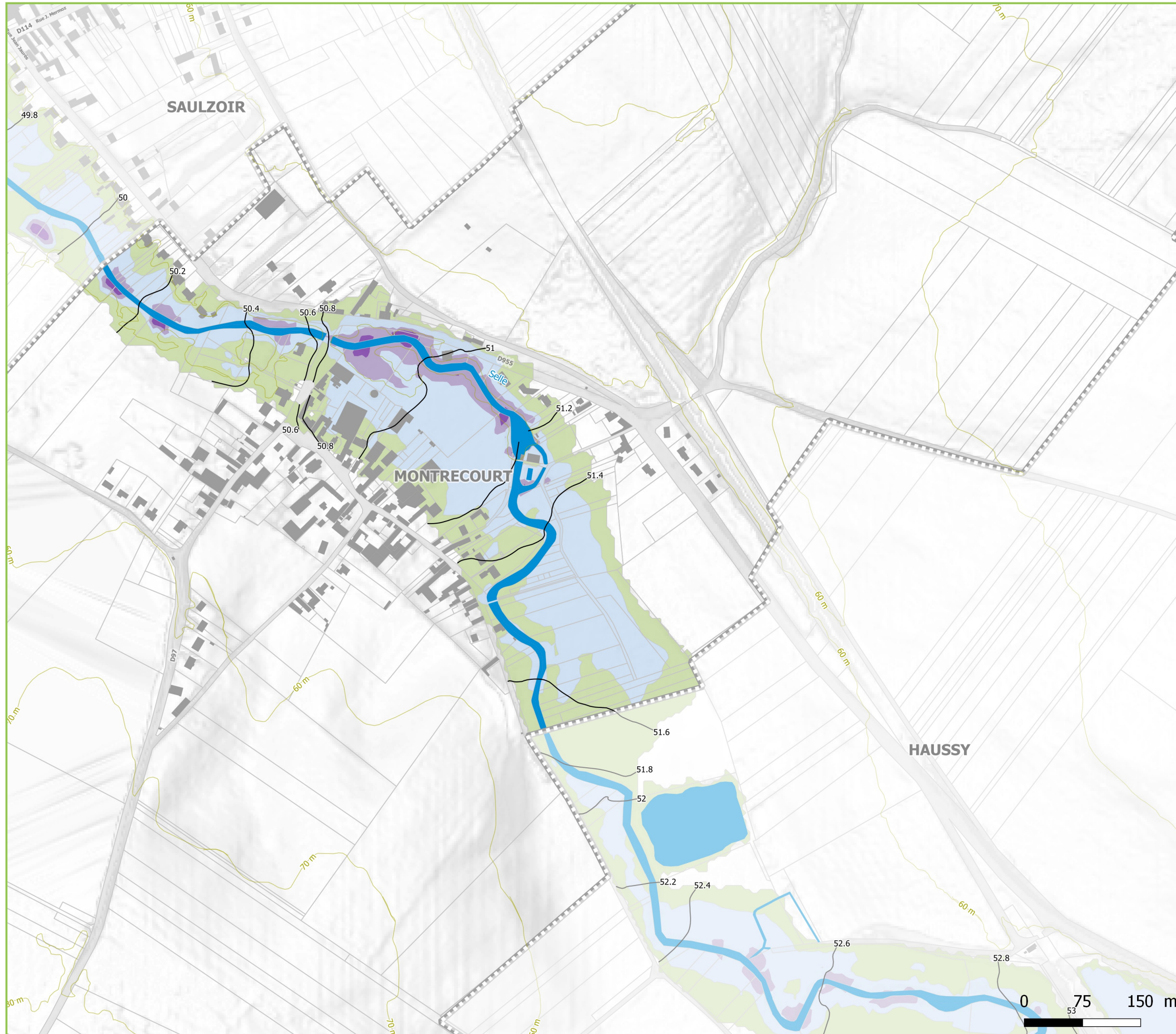
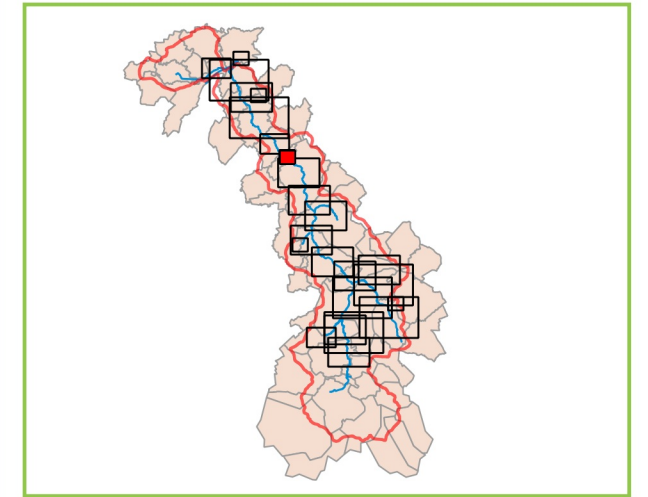





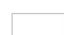
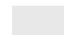

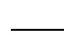
Carte des hauteurs maximales de submersion de la vallée de la Selle




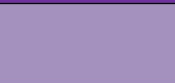
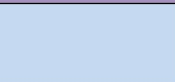

MONTRECOURT



Éléments généraux

-  Limites communales
-  Bâti
-  Lit mineur de la Selle
-  Parcellaire du cadastre
-  Voirie
-  Courbes de niveau (10 m)
-  Isocotes en m NGF (0.2 m)

Grille des hauteurs de submersion

Hauteur de submersion	Supérieure à 1,5 m	
	De 1 m à 1.5 m	
	De 50 cm à 1 m	
	Inférieure à 50 cm	



Liberté • Égalité • Fraternité
RÉPUBLIQUE FRANÇAISE

Système de coordonnées : Lambert 93 (RGF93)
Projection : Lambert conique conforme
Source : DGI-cadastre mis à jour Fev2014